

# WASTBERG+ CREATES LIGHTING THAT IS EMOTIONAL, FUNCTIONAL, SUSTAINABLE, AND AFFORDABLE. OUR DEFINITION OF GOOD LIGHT.

# W+

Wastberg+ merges the emotional legacy of Swedish lighting pioneer Wästberg with the technical lighting expertise of XAL Group – opening up new ways of designing, developing and experiencing light.



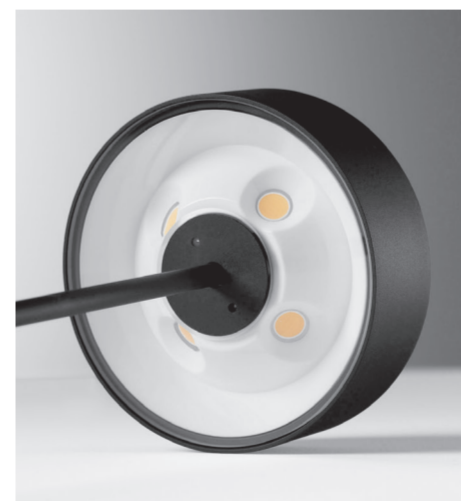
## CAST

SUSPENDED  
W261S  
FOSTER + PARTNERS  
INDUSTRIAL DESIGN

## VAST ILLUMINATION

Drawing on brutalist aesthetics and advanced engineering, Alto pairs strict, bold form with an amazing spread of soft, indirect illumination. The result: calm, atmospheric light that feels both powerful and composed.

A more compact pendant that brings Alto's characteristic light to smaller spaces. With a slightly softer light expression and a smooth, sleek underside. The standard length is 1200 mm, with 2500 mm available as a special option.



**MOUNTING**  
Suspended  
**LIGHT SOURCE**  
COB LED  
**COLOUR TEMPERATURE**  
2700K, 3000K  
**LUMINOUS FLUX**  
3900 lm, 4100 lm  
**SYSTEM POWER**  
36 W  
**CRI**  
≥ 90  
**LIGHT CONTROL**  
Phase-cut dim, DALI Push dim  
**COLOURS**  
Jet black, Traffic white, Raw tumbled

## DIRECT LIGHT

**MOUNTING**  
Ceiling, Semi-recessed, Suspended, Track  
**LIGHT SOURCE**  
COB LED  
**COLOUR TEMPERATURE**  
2700K, 3000K  
**LUMINOUS FLUX**  
1150 lm  
**SYSTEM POWER**  
10 W  
**CRI**  
≥ 90  
**BEAM ANGLE**  
Narrow, Medium, Flood  
**LIGHT CONTROL**  
Phase-cut dim, DALI Push dim  
**COLOURS**  
Black anthracite, White, Bronze, Raw tumbled

In a category often shaped by technical expressions, Cast takes a different path. Soft geometry, concealed mechanics, and fluid movement create directional light a more human presence, without compromising clarity or performance. A vibration-treated surface creates a distinct, warmth texture with depth and premium durability.



## ALTO

SUSPENDED  
W164S2  
DIRK WINKEL



# BABEL



SEMI-RECESSED  
W264R  
THAM & VIDEGÅRD

# LIGHT WITH SOMETHING TO SAY

Expressive without being loud, Babel combines playfulness with poise, its striking form giving it bold confidence and clear sense of direction. Available in two sizes, Babel can read as a quiet accent or a more pronounced statement – or, when used together, as a dynamic dialogue.

**MOUNTING**  
Semi-recessed  
**LIGHT SOURCE**  
COB LED  
**COLOUR TEMPERATURE**  
2700 K, 3000 K  
**LUMINOUS FLUX**  
1000 lm  
**SYSTEM POWER**  
8 W  
**CRI**  
≥ 90  
**BEAM ANGLE**  
Medium  
**LIGHT CONTROL**  
Phase-cut dim, DALI Push dim  
**COLOURS**  
Signal white, Grey white



# LINIER

FLOOR  
W181F  
DIRK WINKEL



**MOUNTING**  
Floor  
**LIGHT SOURCE**  
Integrated LED  
**COLOUR TEMPERATURE**  
2700 K, 3000 K  
**LUMINOUS FLUX**  
Direct: 2250 lm, Indirect: 4660 lm  
**SYSTEM POWER**  
56 W  
**CRI**  
≥ 90  
**LIGHT CONTROL**  
Integrated dimming on pole  
**COLOURS**  
Jet black, Traffic white

# A LINEAR SPOTLIGHT

Defined by its strikingly slender form, Linier pairs strict minimalism with surprising performance, intuitive use, and comfortable light.

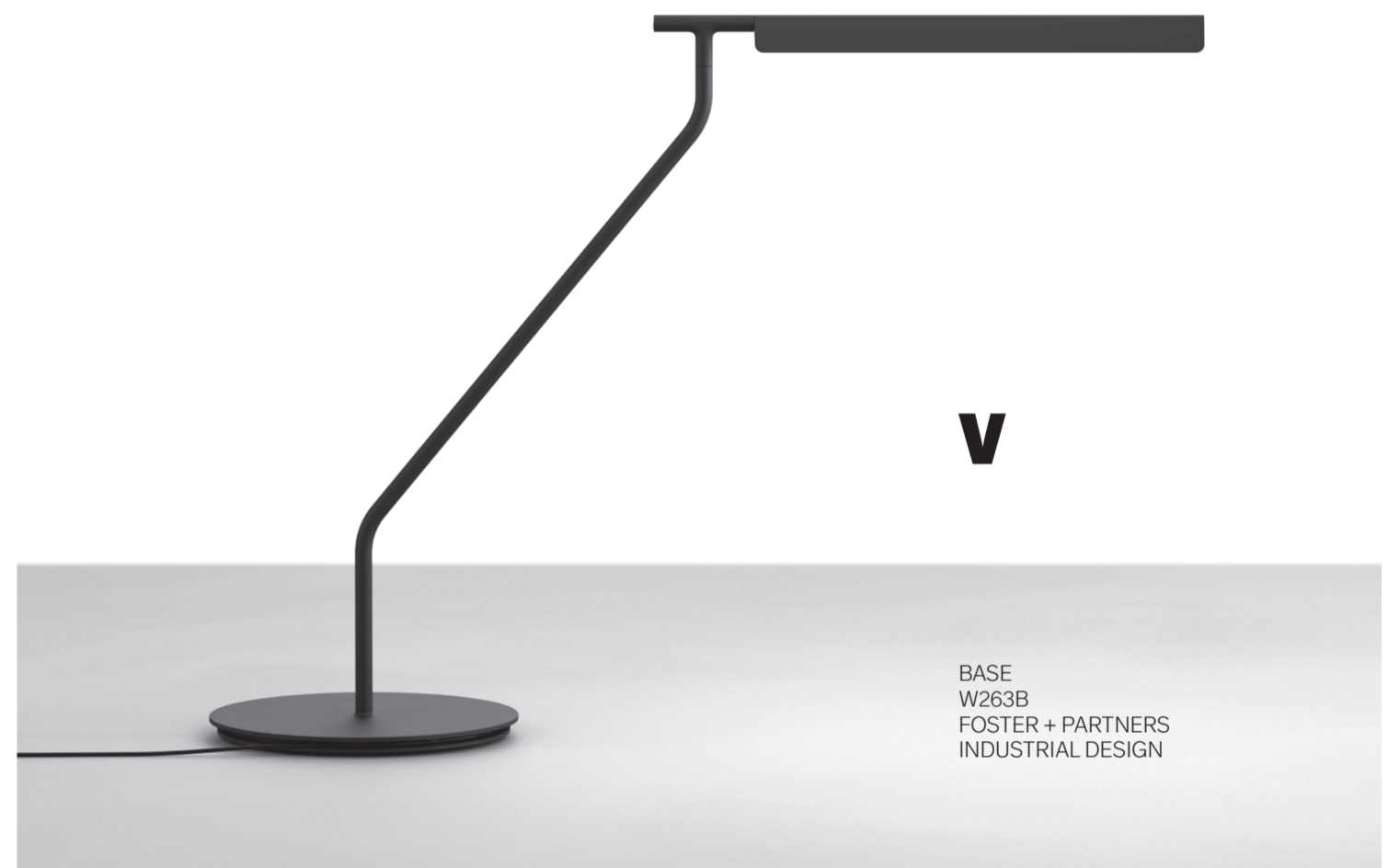
This free-standing floor version retains Linier's characteristic slender proportions, while offering both an upward indirect light and focused downward illumination – each independently adjustable via sliding dimmers.

# LIGHT, EXTENDED



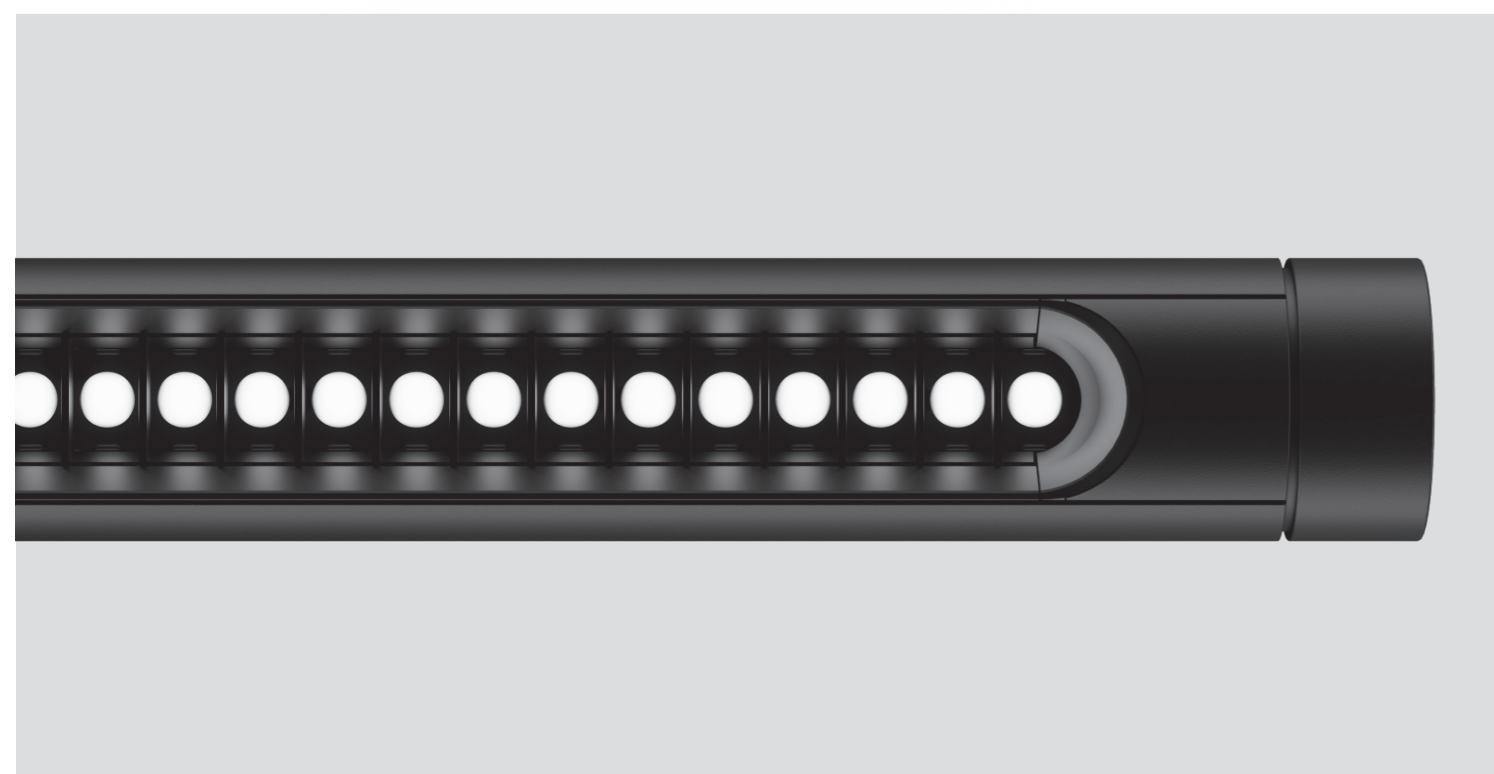
**MOUNTING**  
Base, Clamp, Bracket, Floor  
**LIGHT SOURCE**  
Integrated LED  
**COLOUR TEMPERATURE**  
2700 K, 3000 K  
**LUMINOUS FLUX**  
750 lm  
**SYSTEM POWER**  
9 W  
**CRI**  
≥ 90  
**LIGHT CONTROL**  
Integrated dimming switch

In one clean, deliberate gesture, V extends a sweep of adjustable task light exactly where it's needed – over a desk, in a reading space or on a bookshelf. Its clear, angular expression, small footprint and flexible positioning allow it to reach that little bit further, without feeling obtrusive or cluttered.



# V

BASE  
W263B  
FOSTER + PARTNERS  
INDUSTRIAL DESIGN



# VAST ILLUMINATION



Drawing on brutalist aesthetics and advanced engineering, Alto pairs strict, bold form with an amazing spread of soft, indirect illumination. The result: calm, atmospheric light that feels both powerful and composed.

This wall-mounted version is designed to provide a more powerful, slightly outward-angled uplight, ideal for larger spaces, while the compact wall-mounted version provides a spread of slightly outward-angled uplight, suitable for smaller spaces.

**MOUNTING**  
Wall  
**LIGHT SOURCE**  
COB LED  
**COLOUR TEMPERATURE**  
2700 K, 3000 K  
**LUMINOUS FLUX**  
W164W1: 4015 lm, W164W2: 2030 lm  
**SYSTEM POWER**  
W164W1: 36 W, W164W2: 18 W  
**CRI**  
≥ 90  
**LIGHT CONTROL**  
DALI Push dim  
**COLOURS**  
Jet black, Traffic white, Raw tumbled