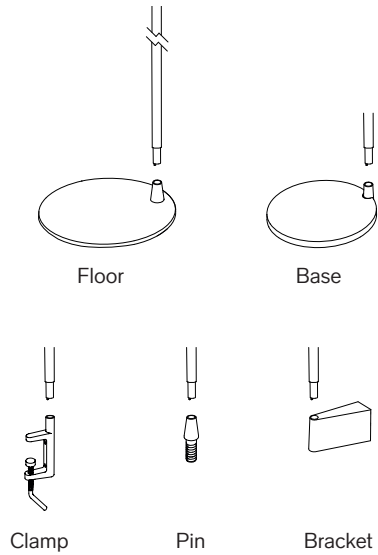
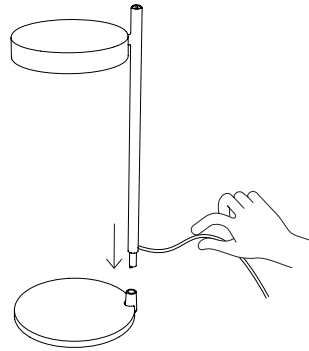


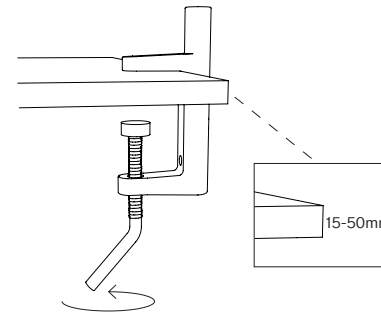
1.



2. Floor / Table



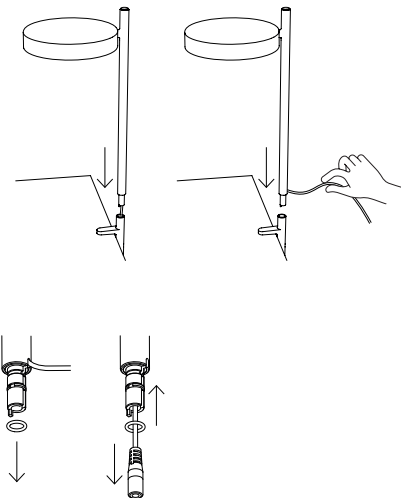
3. Clamp



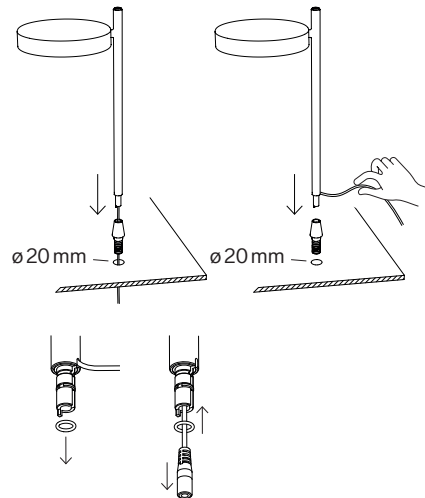
**EN Mounting instructions**

1. There are five different mounting accessories to attach the lamp to.
2. **Floor / Table**  
Attach the lamp to the base.
3. **Clamp**  
Secure the clamp by turning the screw.
4. Attach the lamp to the clamp.  
Pull the cord through the clamp or the hole in the pole.  
For the pull through variant remove the rubber ring, put the cable through it and place the rubber ring again.
5. **Pin**  
Pull the cord through the pin or the hole in the pole.  
For the pull through variant remove the rubber ring, put the cable through it and place the rubber ring again.  
Place the pin in the hole,  $\varnothing 20$  mm hole size.
6. Secure with the washer & nut under the table.

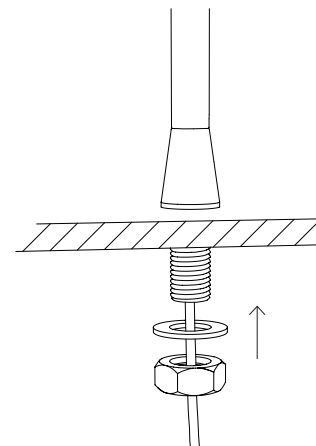
4.



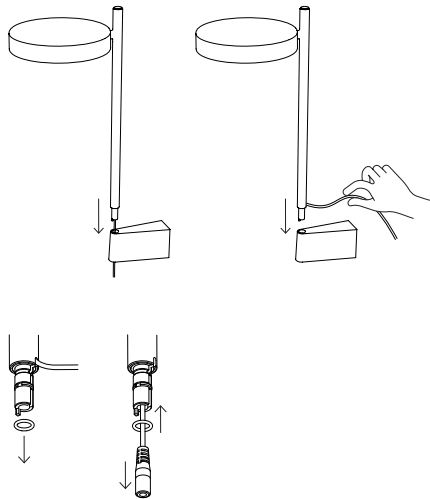
5. Pin



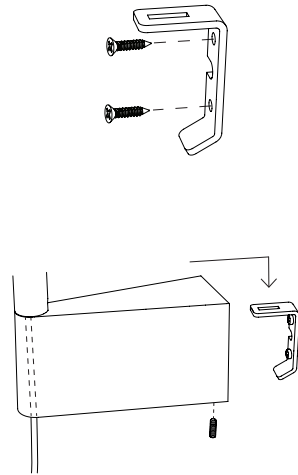
6.



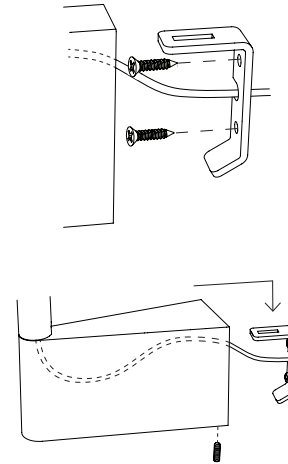
**7. Wall bracket**



**8a.**



**8b.**



**EN Mounting instructions**

**7. Wall bracket**

Attach the lamp to the wall bracket.  
Pull the cord through the bracket or the hole in the pole.  
For the pull through variant remove the rubber ring, put the cable through it and place the rubber ring again.

**8a.** Mount the bracket to the wall (Screws are not included).

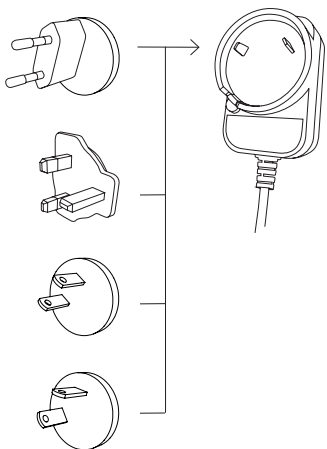
**8b.** For connection behind the wall, pull the cord through the bracket.

**9.** Attach the plug to the adapter.

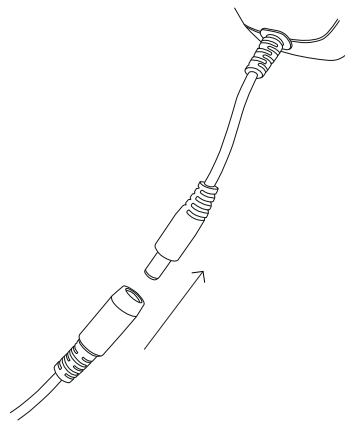
**10.** Connect the power cord to the adapter.

**11.** Press the button to turn the light on and off.  
Press and hold to dim the light.

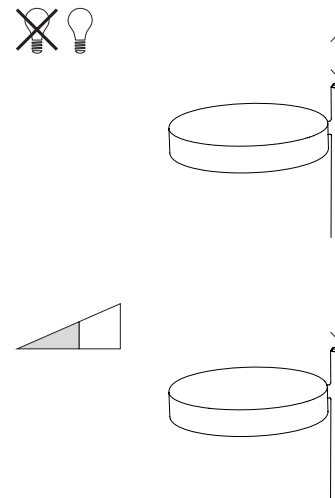
**9.**



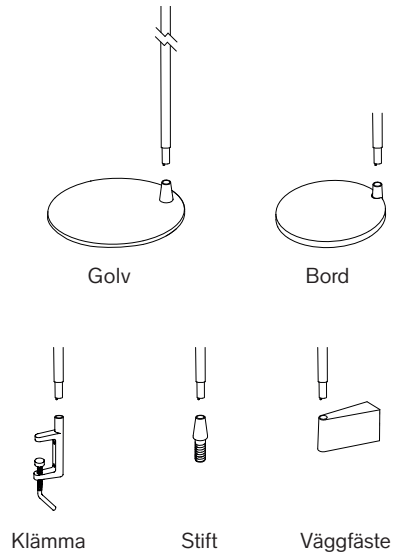
**10.**



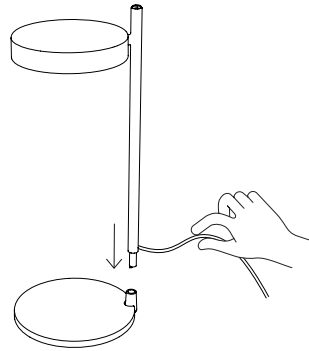
**11.**



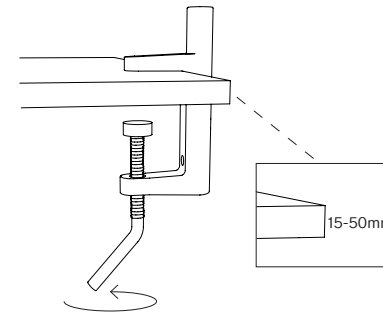
1.



2. Golv / Bord



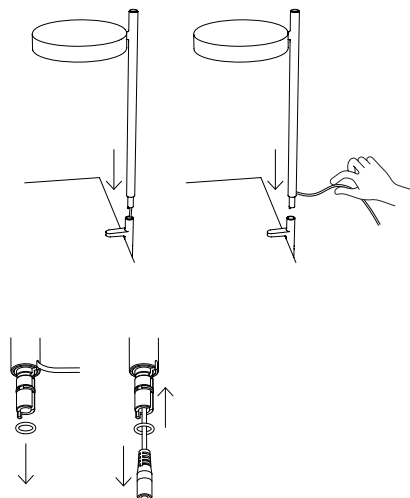
3. Klämma



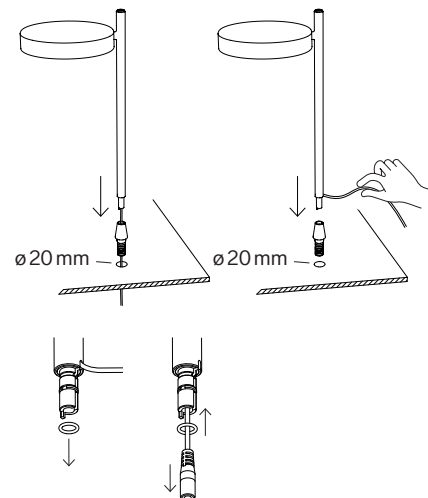
**sv Monteringsanvisningar**

1. Det finns fem olika monteringsdetaljer att fästa lampen på.
2. **Golv / Bord**  
Fäst lampen på basen.
3. **Klämma**  
Fäst klämman genom att vrida på skruven.
4. Fäst lampen på klämman.  
Dra sladden genom klämman eller hålet i stängen. För genomdragningsvarianten, ta bort gummiringarna, dra igenom sladden och sätt tillbaka gummiringarna.
5. **Stift**  
Dra sladden genom stiftet eller hålet i stängen. För genomdragningsvarianten, ta bort gummiringarna, dra igenom sladden och sätt tillbaka gummiringarna.  
Placera stiftet i hålet, hålstorlek  $\varnothing 20$  mm.
6. Fäst med brickan och muttern under bordet.

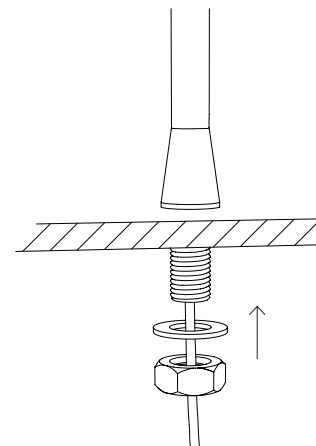
4.



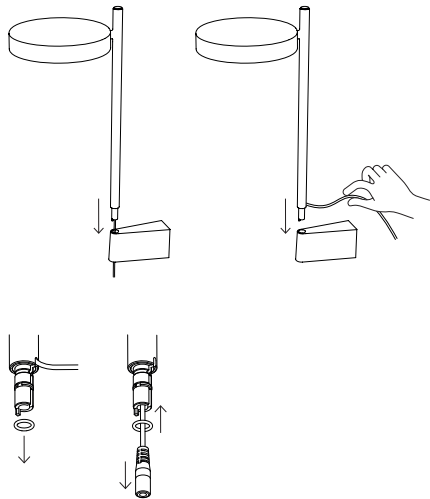
5. Stift



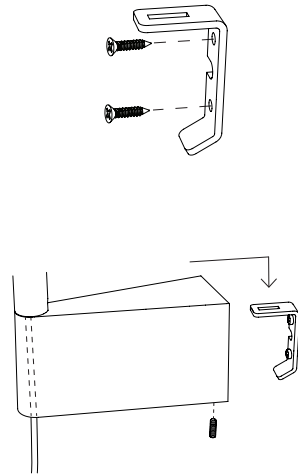
6.



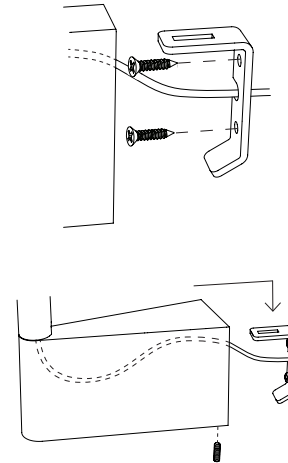
**7. Wall bracket**



**8a.**



**8b.**



**sv Monteringsanvisningar**

**7. Väggfäste**

Fäst lampan på väggfästet.  
Dra sladden genom fästet eller hålet i stängeln.  
För genomdragningsvarianten, ta bort gummiringarna, trä sladden genom dem och sätt tillbaka gummiringarna.

**8a.** Montera fästet på väggen (Skruvar ingår ej).

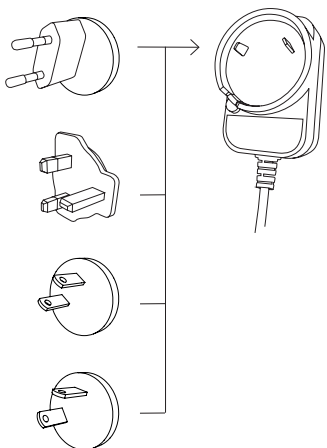
**8b.** För anslutning bakom väggen, dra sladden genom fästet.

**9.** Fäst kontakten på adaptern.

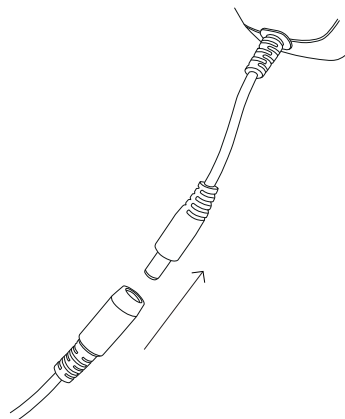
**10.** Anslut strömsladden till adaptern.

**11.** Tryck på knappen för att tända och släcka lampan.  
Håll knappen intryckt för att dimra lampan.

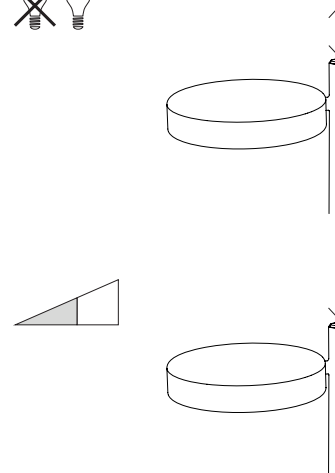
**9.**



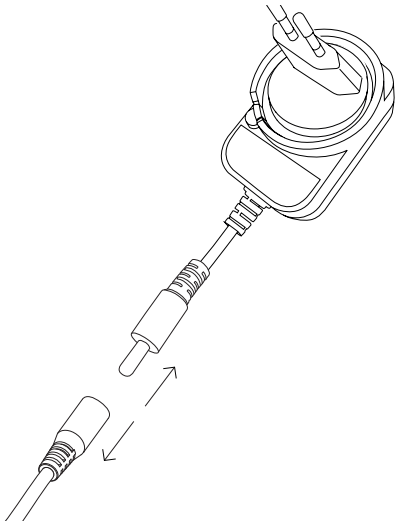
**10.**



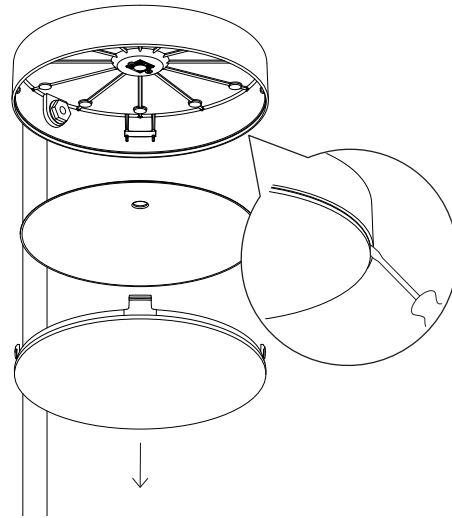
**11.**



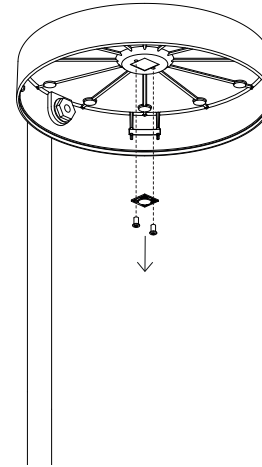
1.



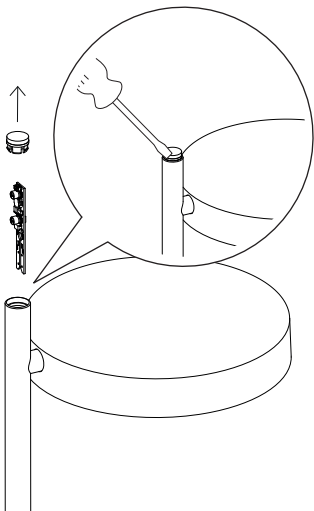
2.



3.



4.



### EN Dismounting instructions

#### Power plug

1. Disconnect the plugs.

#### Light source

2. Pull out the diffuser and reflector by using a flat tool.
3. Disconnect the wires and unscrew the light source to remove it.
4. Pull out the button by using a flat tool and remove the control board.

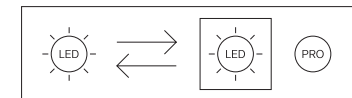
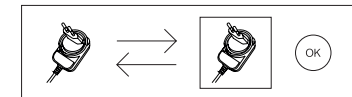
### sv Demonteringsanvisningar

#### Strömkontakt

1. Koppla bort kontakterna.

#### Ljuskälla

2. Dra ut diffusorn och reflektorn med hjälp av ett platt verktyg.
3. Koppla bort kablarna och skruva loss ljuskällan för att ta bort den.
4. Dra ut knappen med hjälp av ett platt verktyg och ta bort styrkortet.



EN This product contains a light source of energy efficiency class D. The light source is replaceable by Wästberg or by a professional with explicit authorisation. The power plug is replaceable by the end user. For more information please contact your local Wästberg customer service point.

sv Denna produkt innehåller en ljuskälla med energieffektivitetsklass D. Ljuskällan kan bytas ut av Wästberg eller av en professionell med uttryckligt tillstånd. Strömkontakten kan bytas ut av slutanvändaren. För mer information, kontakta din lokala Wästberg-kundtjänst.